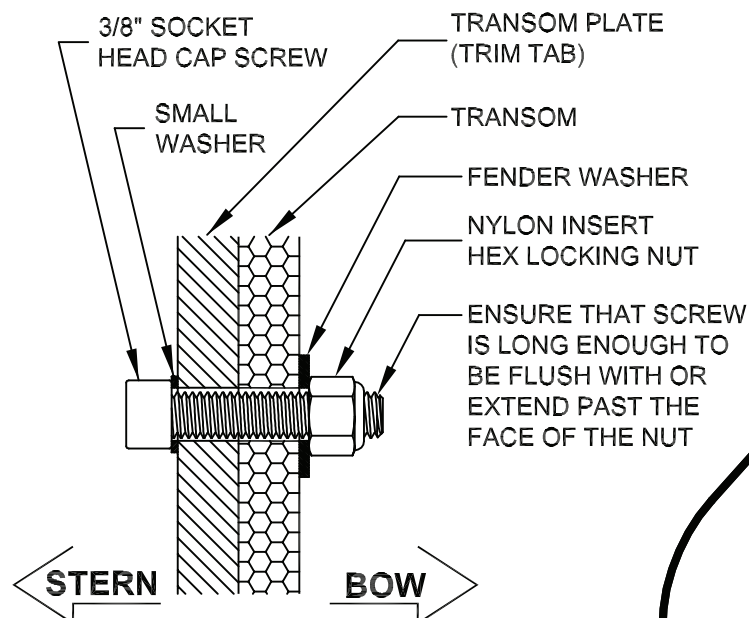




Livorsi Transom Plate
 Livorsi Bolt Pattern
 Scale 1:1

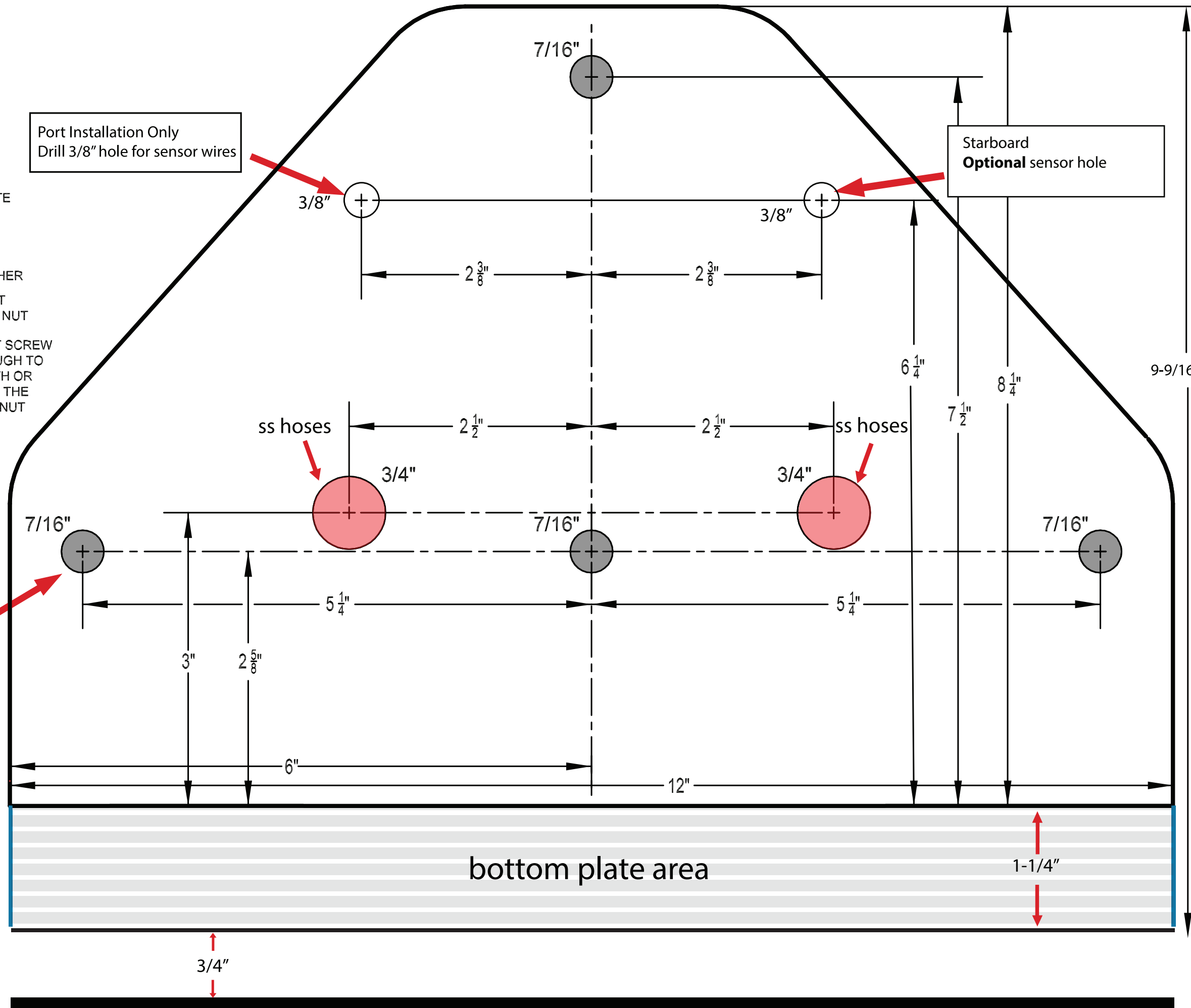


TYPICAL FASTENER INSTALLATION

Ø .390 THRU ALL (X4)
 Thru Bolts

Port Installation Only
 Drill 3/8" hole for sensor wires

Starboard
Optional sensor hole



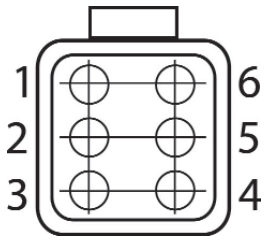
bottom plate area

LINE UP WITH THE BOTTOM OF
 THE BOAT FOR RECOMMENDED
 SETTING OF 3/4" FROM LOWER
 TRIM PLATE TO BOAT BOTTOM

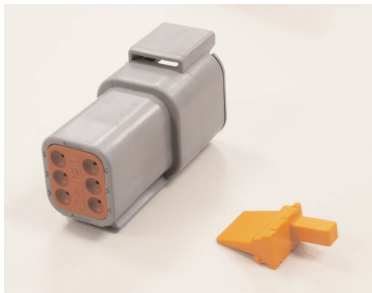
Billet Trim Tab Installation

Sensor Wiring

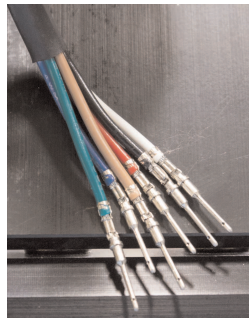
The sensor wire leads that were fished thru the transom will need to be inserted in to the 6 pin Deutsch connector and secured with a wedge lock. Below is the pin out.



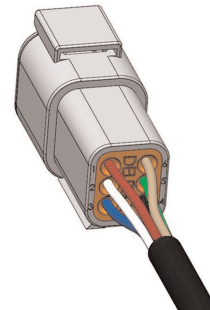
Pin Number	Wire Color	Description
1	Red	PPS1 (5V)
2	White	PPS2 (5V)
3	Blue	PPS1 Signal
4	Black	PPS1 Ground
5	Green	PPS2 Ground
6	Tan	PPS2 Signal



connector wedge lock

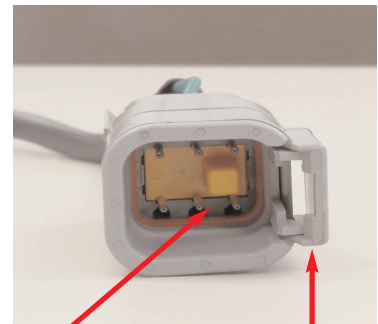


sensor wires
from trim tab



Once pins are pushed thru the connector, insert the wedge lock to secure pins.

The “arm” of the wedge lock should face the same side as the connector clasp.



wedge “arm”

connector clasp