

62 DataTach™ Prop Slip™

- Gauge size: 4 5/8" cutout 5" overall
- Choose from a Mega or Race rim
- LCD screen displays:
 - GPS speed
 - prop slip
 - single or dual tach
 - compass heading

What is prop slip?

Pitch is the distance the boat travels through the water in one complete turn of the propeller. Every inch of the boat that is in contact with the water induces drag. Therefore the distance traveled is not always the same. This results in the propeller "slipping" behind the theoretical distance it should travel with each rotation. The difference between theory and reality is called "propeller slip".

How it works

The DataTach™ Prop Slip™ has a computer that receives GPS speed and RPM info and calculates the slip of your boat's propeller. Slip is calculated 5X per second.

A lower prop slip % = better performance

$$\text{Slip} = \frac{\text{speed (mph)} \times 1056 \times \text{drive ratio}}{\text{RPM} \times \text{pitch (inches)}} \times 100$$

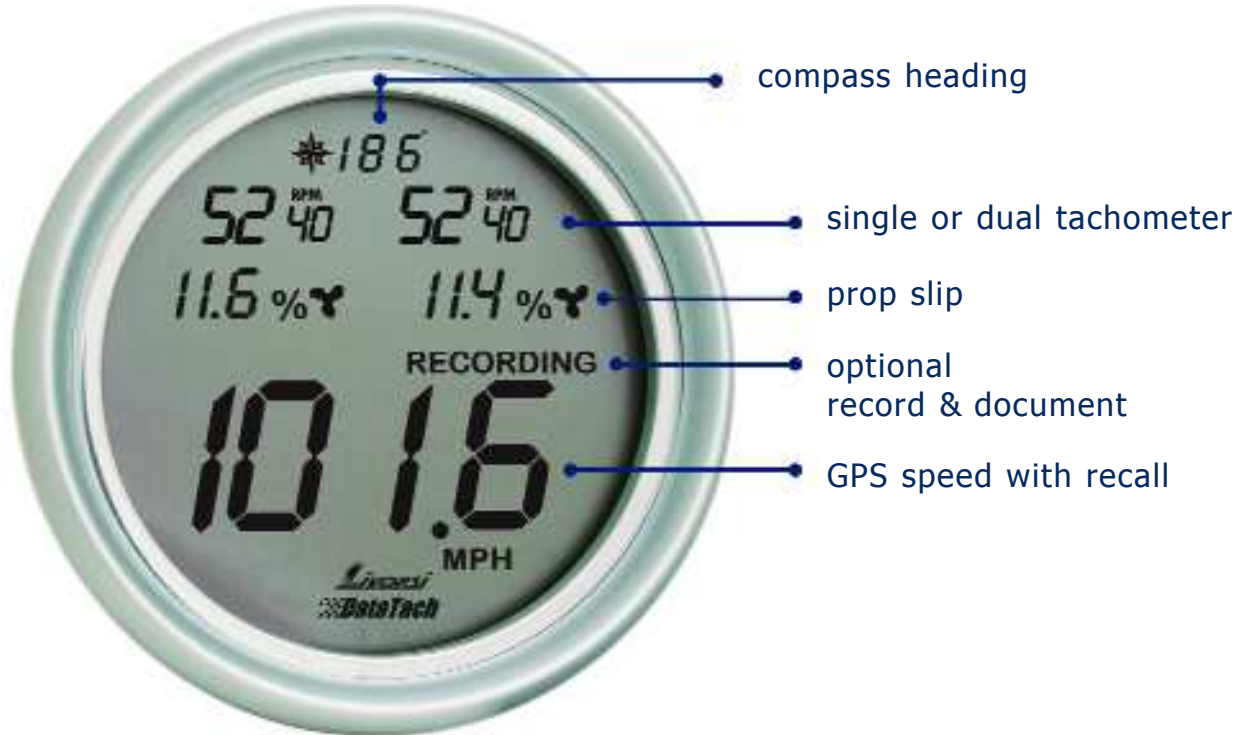
Factors that affect prop slip:

- trim angle
- propeller size
- pitch of propeller
- weight distribution
- jack plate mounting
- condition of propeller
- engine mounting height
- condition of boat bottom

Gain speed and increase fuel efficiency.
Know your boat's most effective drive height, trim angle and propeller size.

Leasing options available
for the Portable Test Kit
For details please call
847-752-2700





compass heading

single or dual tachometer

prop slip

optional record & document

GPS speed with recall

Gauge only

Part Number PSGPS200

Gauge kit includes:

- gauge
- GPS antenna
- record/ recall switch plate
- wire harness

Part Number PSGPS200K

Record & Document

www.propslip.com

You can start and stop recording at anytime during a boating session. The formatted SD memory card can record up to 8 hours of testing time.

To see a clear picture of your boats performance visit the Prop Slip webiste www.propslip.com. This site converts your recorded information in to an easy to read chart. You can even compare your boats performance to that of other boats that were tested. This service is free of charge.



record/recall switch plate

colors available for switch plate

Description	Part Number
memory module	PSMM

Please note Livorsi does not operate the www.propslip.com webiste.



Portable Test Kit

Take this portable test kit on test runs when preparing for a race or a poker run. The test kit provides quick and easy hook-up of the DataTach™ Prop Slip™ by packaging it in a convenient waterproof case. The GPS antenna and power supply are built in so you can take this kit anywhere. Give the DataTach™ some info on your boat (tach signal, propeller pitch, drive ratio and tach pulses per engine revolution) and you're ready to go.

Lease the Portable Test Kit

Test drive our portable test kit and reap the benefits of this revolutionary instrument. For details please call 847-752-2700.

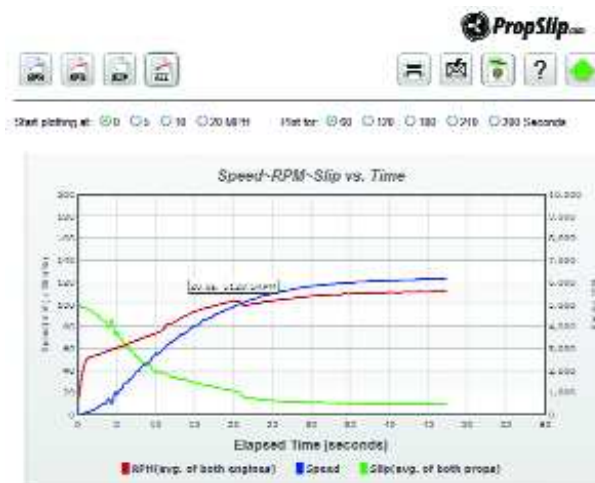
Portable test kit includes:

- Enclosed in a waterproof case
- gauge
- GPS antenna
- memory card
- USB reader
- AC adapter
- DC adapter
- harness connections to tachs
- instruction booklet

Part Number PSPTK



Gain speed and increase fuel efficiency.
Know your boat's most effective drive height, trim angle and propeller size.



www.propslip.com
converts your recorded info into an easy to read chart