



Garmin panel mounted
shown with Vantage View gauges

GPSMAP® 5208 and GPSMAP® 5212 easily connects to the high-speed Garmin Marine Network, so you can interface with additional MFDs and add remote sensors. You can also add high-powered radar, sonar, and XM™ satellite weather and radio to your system.



Mix and Match with Vantage View gauges to see Alarms, Faults and Warnings. See page 55



- Menu-driven touchscreen interface
- High resolution display
- Panel or bracket mount
- World wide satellite imagery
- Preloaded US marine charts including Alaska, Hawaii and Bahamas
- NMEA2000 support for engine monitoring
- Connect to the Garmin Marine Network to add sonar, radar and weather

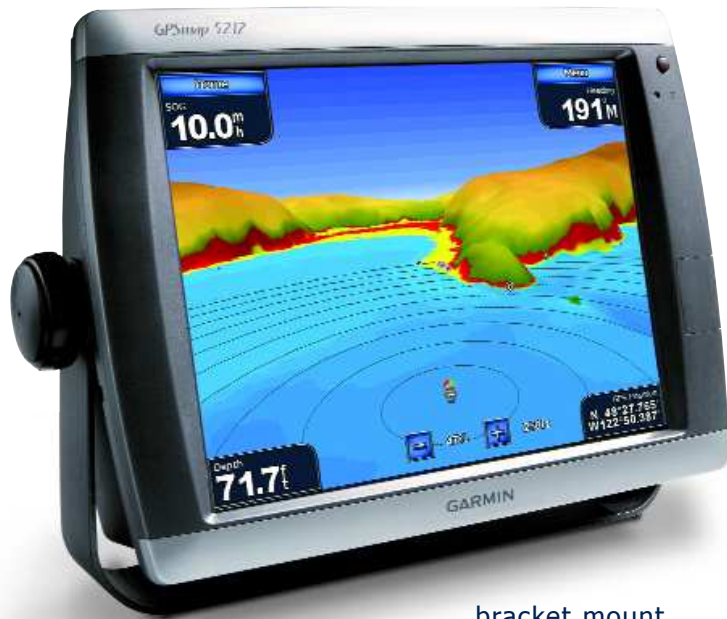
GPSMAP® 5208

- Dimensions: 10.1" W x 6.8" H x 4.2" D
- Overall: 10 3/4" W x 7 1/4" H
- Screen size: 8.4" diagonally
- Resolution 640 x 480

What you get

- GPSMAP® 5208
- Bail mount
- Power cable
- Video cable assembly
- Protective front cover
- Installation instructions
- Flush mount
- GPS 17x NMEA2000
- NMEA0183 cable
- Marine grommet kit
- Owner's manual

Display	010-00593-01
bezel	GPSB5208 + color



bracket mount

GPSMAP® 5212

- Dimensions: 12" W x 9.5" H x 4.7" D
- Overall: 13 1/4" W x 9 3/4" H
- Screen size: 12.1 diagonally
- Resolution 1024 x 768

What you get

- GPSMAP® 5212
- Flush mount
- Bail mount
- GPS 17x NMEA2000
- Power cable
- NMEA0183 cable
- Video cable assembly
- Marine grommet kit
- Protective front cover
- Owner's manual
- Installation instructions

Display 010-00594-01

bezel GPSB5212 + color

Every function is controlled right from the touchscreen. Just point, press and go.

GC10™ Marine Camera



- Standard or reverse-image cameras
- Works inside or outside
- Reverse-image cameras reverse the video on your screen, perfect for backing out of tight locations
- Infra-red feature for low-light conditions
- Anodized exterior with a powder coated aluminum housing is corrosion resistant for long-term use
- 2.7" H x 3.7" W x 2.8" D

standard image	010-11372-00
reverse image	010-11372-01



GSD™ 22 Sounder

Part Number 010-00397-00

- Must be used on 5208/5212 for sonar picture
- Adjusts gain and transmit power automatically to optimize the returns for shallow water
- Connects to a dual-frequency transducer and works with everything from a standard 500 watt transom-mount transducer to a heavy-duty 2 kW thru-hull or in-hull transducer and can reach a depth of up to 5,000 feet

58 Garmin® transducers

These transducers have the following features, in addition to what is listed below:

- Beam width:
 - 50 kHz- 45°
 - 200 kHz- 12°
- Depth Range:
 - 50 kHz- 800 ft to 1200 ft
 - 200 kHz- 400 ft to 700 ft

In-Hull/Shoot Thru Airmar P79

- In-hull plastic housing
- Depth only
- 50/200 kHz
- 600 Watts
- 25 ft cable
- No holes to drill or hull protrusions on solid fiberglass up to 1" thick & aluminum hulls under .15" thick
- Recommended for planning hull power boats, trailered boats, rigid inflatable boats (RIBS) and racing sailboats
- Adjustable for deadrise angles up to 22°

Part Number 010-10327-00



Transom Mount Airmar P66

- Transom mount plastic housing
- Depth, speed & temperature
- 50/200 kHz
- 600 Watts
- 25 ft cable
- Designed for large outboard and I/O powered boats up to 35 ft
- Accommodates transom angles of 2° to 20°

Part Number 010-10192-01

Flush Thru-Hull Airmar B60 Tilted Element



- Thru-hull bronze housing
- Depth & temperature
- 50/200 kHz
- 600 Watts
- 30 ft cable
- Fixed tilted element compensates for hull deadrise aiming the beam straight down resulting in strong echo returns and accurate depth readings
- For use on fiberglass and wood hulls
- 12° accommodates 8° to 15° hull deadrise
- 20° accommodates 16° to 24° hull deadrise

20° tilt 010-10982-00

12° tilt 010-10982-01

For Depth only display (no picture) a NMEA2000 Intelliducer must be used.

Available in transom or thru-hull. Please call for pricing.

Flush Thru-Hull Airmar P319

- Thru-hull plastic housing
- 50/200 kHz
- 600 Watts
- 39 ft cable
- Low profile design has no effect on your boats running performance
- For use on fiberglass and metal hulls with 0° to 12° of deadrise
- Requires connection to GSD22 for sonar display

depth only 010-10194-00

depth & temperature 010-10194-01



shown above

Nortech

photo courtesy of
Florida Powerboat Club



shown above

Hustler

Smartcraft® MercMonitor pg 60

GPS Speedo w/ Odometer pg 67

Harness Capabilities pg 71

Keypad Start pg 72

60 Smartcraft® MercMonitor



Displays
NMEA2000
Compatible



Gauges
NMEA2000
Compatible



Engines
NMEA2000 Compatible
Outboards & Sterndrives



Systems
Trim Tabs
Depth Sounders



GPS
Chart Plotters
Pucks

NMEA2000/J1939+
Out/In Supported Data Level

RPM	1 · 2 · 3
Voltage	1 · 2 · 3
Oil Pressure	1 · 2 · 3
Coolant Temperature	1 · 2 · 3
Tank Level Fuel	1 · 2 · 3
Trim Position	1 · 2 · 3
Water Pressure	1 · 2 · 3
Check Engine Alarm	1 · 2 · 3
Fuel Flow	2 · 3
Engine Hours	2 · 3
Boost Pressure ⁵	2 · 3
Oil Temperature ⁵	2 · 3

featuring Mercury® Gateway

MercMonitor converts engine and system data to NMEA2000/J1939 protocol for use on NMEA2000/J1939 multifunction gauges and displays

Merc Monitor Kits	3 3/8" cutout	Part Number
Single Engine- Troll Control- NMEA2000	Data Level 1	879337K51
Single Engine- RPM SmartTow- NMEA2000	Data Level 2	879338K51
Multi Engine- RPM SmartTow- NMEA2000	Data Level 3	879337K52
Multi Engine- GPS SmartTow Pro- NMEA2000	Data Level 3 includes GPS antenna	879339K51
	Billet Race Rim	MMRR + color

⁵ Available on Mercury Verado

⁶ Available on Cummins MerCruiser Diesel Engines

† J1939 limits signals and data levels

NMEA2000 Only
Out/In Supported Data Level

Multiple Tank Levels	2 · 3
Tabs	2 · 3
GPS Speed/COG/ Lat-Lon (in only)	2 · 3
Depth	2 · 3
Sea Water Temp	2 · 3
Paddle speed	2 · 3
Pitot Speed	2 · 3
Rudder Angle	3
Gear Pressure ⁶	3
Gear Temp ⁶	3
Fuel Pressure	3



MercMonitor converts SmartCraft® engine and system data to NMEA 2000®/J1939 protocol for use on NMEA 2000®/J1939 multifunction gauges and displays such as Garmin, Lowrance, Ray Marine and others.

Use the MercMonitor in combination with Vantage View gauges and multi-functions displays for the most comprehensive collection of information delivered right to your helm.

Shown here: Vantage View gauges with blue Race rims, Garmin GPSMAP® 740 with Livorsi's billet aluminum powder coated bezel in blue and the MercMonitor with a blue rim.



Vantage View gauges pg 44
Garmin displays pg 56



featuring ECO-Screen

The ECO feature is constantly monitoring engine RPM, boat speed, fuel consumption and engine trim† to automatically calculate and guide you to your best fuel economy settings.

† Digital trim sender required for full functionality



Not Optimized

Optimized