

# 18 gauge styles

## Industrial Series

pg 28

dials: black or white

rims: SAE in black, white or  
polish stainless steel

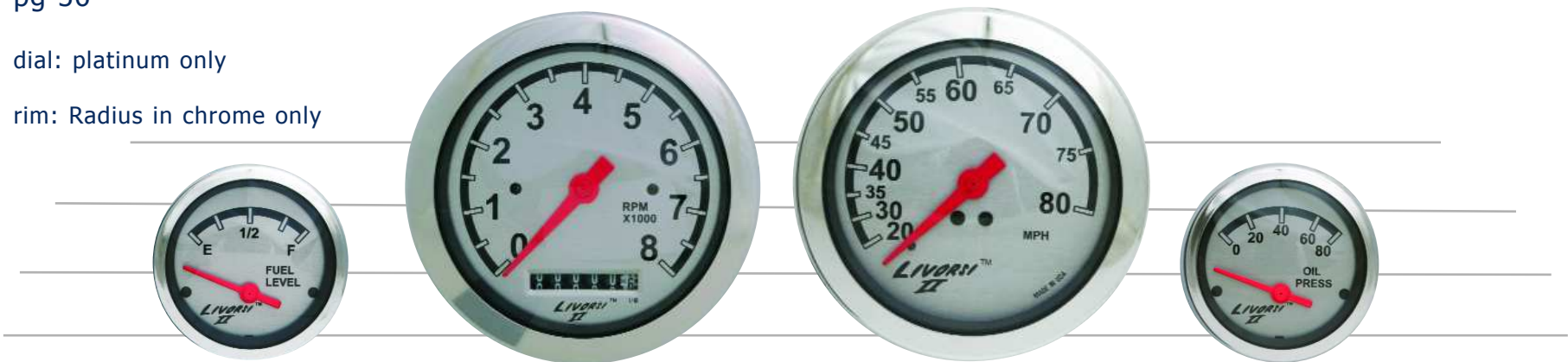


## Livorsi II Special Edition

pg 36

dial: platinum only

rim: Radius in chrome only



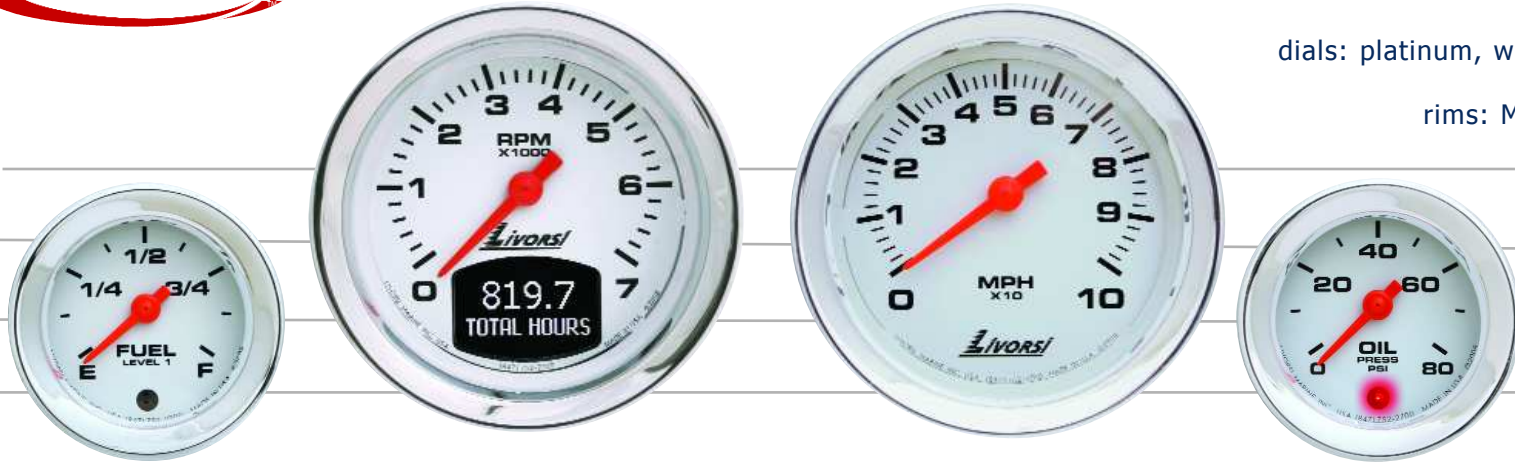
## VANTAGE VIEW

### Vantage View

pg 44

dials: platinum, white or black

rims: Mega or Race



### Mega & Race Series

pg 22

dials: black, platinum,  
carbon fiber, silver  
carbon fiber or white

rims: Mega or Race





**Dash Panel Options**

Available in:  
marine grade aluminum  
with a powder coat finish  
or  
carbon fiber in four colors

see pg 70

For a quote, please call  
847-752-2700

Bezels add detail and  
color to your dash.

Choose from 3 styles  
in a powder coat finish  
or in stainless steel

see pg 83

**Gauges to fit any dash...**

We offer standard or over  
size gauges.

The Vantage View and  
Mega & Race Series allow  
you to mix and match  
sizes for the perfect fit.

**Gauge Options**

Four gauge styles available

With the Vantage View and  
Mega & Race Series; your able  
to custom build the look of  
your gauges.

Shown here: Mega & Race Series  
White dials - Race rims in polish stainless steel - Black bezels

## Carbon Fiber

### Dash Panels



blue carbon fiber



red carbon fiber



carbon Fiber\*



silver carbon fiber\*

\* Also available for Flat Plate Base

## Rim Styles



Race Rim

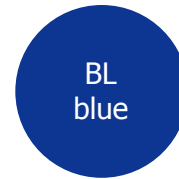


Mega Rim

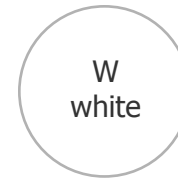


SAE Rim

## Powder Coat Colors



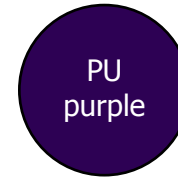
BL  
blue



W  
white



MU  
mustard



PU  
purple



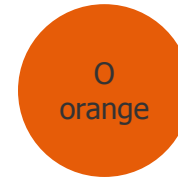
PL  
platinum  
matte finish



L  
lime



PSS  
polished  
stainless  
steel

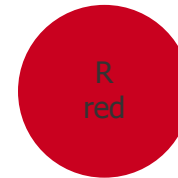


O  
orange

Livorsi II SE gauges  
use chrome rims.



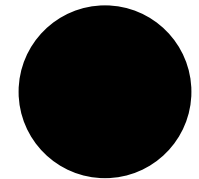
BK  
black  
flat or  
glossy\*



R  
red

\* Glossy black rims or dials  
available upon request.

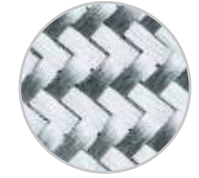
## Dials



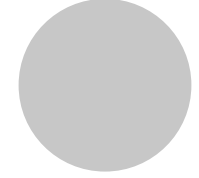
BK-black \*



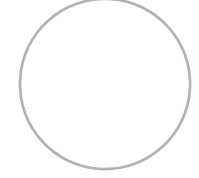
CF- carbon fiber



SF- silver carbon fiber



PL- platinum



W- white