

- Front sealed to prevent fogging
- Gauges have terminal connectors unless noted otherwise

These Special Edition gauges are only available as shown:

- Platinum dial
- Convex lens
- Chrome radius rim
- Fluorescent orange pointer

## Electric

Description	Part Number	Requires
	2 1/16"	
fuel level 240-33 ohms	LIISEFL	-
oil pressure 0-80 PSI	LIISEOP80	-
oil temperature 140-320° F	LIISEOT	-
trimmer 10-90 ohms Mercury/Yamaha dated 2000 or later	LIISSETMM	-
voltmeter 10-16V	LIISEVM	-
water temperature 100-240° F	LIISEWT	-

cutout size	overall size
2 1/16"	2 3/8"
3 3/8"	3 3/4"
4 5/8"	5"

## Speedometers

Description	Part Number		Requires
	3 3/8"	4 5/8"	
80 MPH	LIISE80	-	Add "K1" for kit
80 MPH w/ deutch plug	-	LIISEMD80	LIISEMH
100 MPH	LIISE100	LIISEM100	Add "K1" for kit

Kit includes: pitot tube, hose and mounts.

## Tachometer / Hourmeter

Description	Part Number		Requires
	3 3/8"	4 5/8"	
5000 RPM mag probe diesel	-	LIISEM5000H	-
7,000 RPM gas deutch connector	-	LIISEMD7000H	LIISEMH
8,000 RPM gas	LIISE8000H	-	-
Deutch harness	LIISEMH	-	-

Note: Mega/Race Tachs work on 4, 6, & 8 cylinder, V-10 engines, 6 pulse/12 pole, or 20 pole alternator diesel

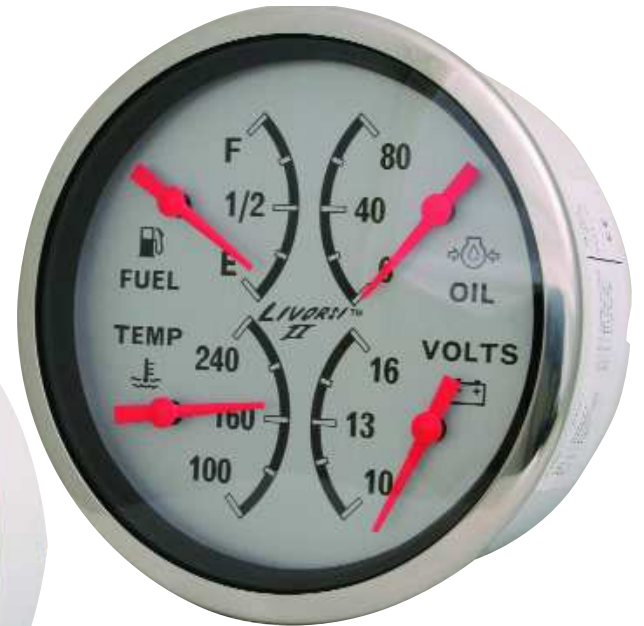
## Four Function Gauge

- 4 5/8" Electric gauge
- Uses deutch connector
- Reads:
  - oil press
  - fuel level
  - volts
  - water temp

Part Number LIISEMD4



LIISE80



LIISEMD4



LIISEM100



LIISE8000H



LIISEOP80



LIISEOT



LIISEFL



LIISETMM



Convex Lense  
with Radius Rim