

Industrial Series

Analog Gauges

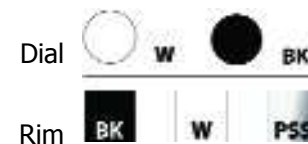
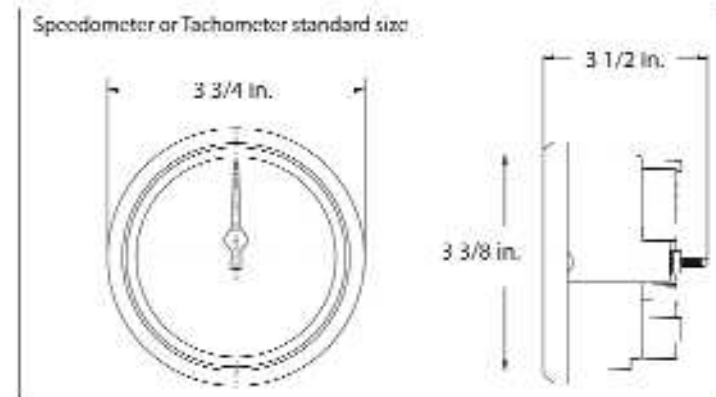
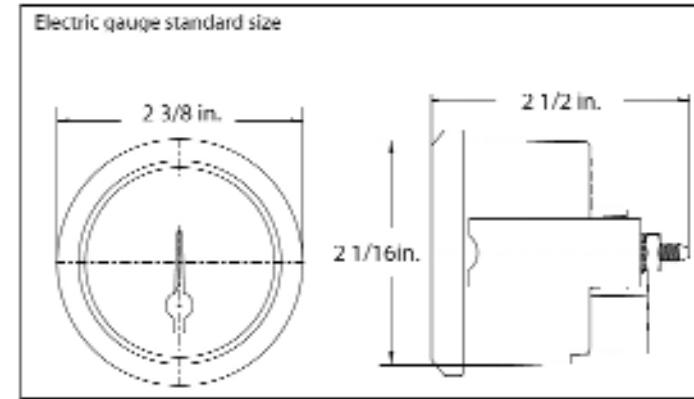
The Industrial series was designed with the industrial equipment, workboats, pleasure boats and vehicles in mind.

Industrial Series gauges are easy to install with the use of plug-in Deutsch connectors that significantly decrease rigging time. The plug-in connectors are waterproof and resist salt corrosion and dust intrusion.

These gauges feature fade resistant powder coated pointers; SAE rims in a powder coat finish or in polished stainless steel. These finishes protect the rims and make them extremely resilient in harsh weather environments.

Industrial Series Features

- Standard gauge sizes
- Plug-in connectors are waterproof and resist salt corrosion
- Gauges are encased in non-ferrous hardware
- Red LED lighting is standard
- Available in 12 or 24 volt system
- Powder coated pointers are fade resistant
- SAE rims in flat black, white or stainless steel



Industrial Series

Tachometers

Gas tachometers are compatible with:
4, 6, & 8 cylinder, V-10 & Merc O/B 6 pulse/12 pole



6,000 RPM



8,000 RPM



10,000 RPM



12,000 RPM



4,000 RPM



DCH

cutout size: 3 3/8"		overall size: 3 3/4"
Tachometers - Gas		
Description	Base Part Number	Requires
6,000 RPM	DCS6000	DCH harness
8,000 RPM	DCS8000	DCH harness
10,000 RPM	DCS10000	DCH harness
12,000 RPM	DCS12000	DCH harness

Tachometer Hardware	
Description	Part Number
DCH harness 12V 24" lead	DCH
DCH harness 24V 24" lead	DCH24
DCH harness 12V w/ tach filter, reduces needle bounce, 24" lead	DCTFH

cutout size: 3 3/8"		overall size: 3 3/4"
Tachometers- Diesel 4000 RPM		
Description	Base Part Number	Requires
alt driven	DC4000DA	DCH harness
mag probe driven	DC4000MPD	DCH harness
mechanical signal generator driven	DC4000MSGD	DCH harness

Industrial Series

GPS Speedometers

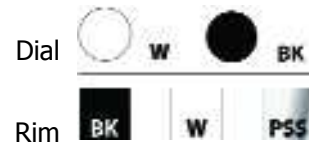
- Livorsi GPS Speedometers require a NMEA 0183 antenna/receiver.

Included with GPS Speedometer

- speedometer
- memory recall
- harness

Included with GPS Speedometer Kit

- speedometer
- memory recall
- harness
- GPS antenna
 - antenna mounts with a 1/4" screw
 - antenna dimensions: 2 3/4" L x 2 3/8" W x 7/8" H



cutout size: 3 3/8"		overall size: 3 3/4"
Description	Base Part Number	Notes
50 MPH	GPSS50	For a GPS Kit, add the letter "K" after the MPH.
60 MPH	GPSS60	
80 MPH	GPSS80	
100 MPH	GPSS100	
120 MPH	GPSS120	
140 MPH	GPSS140	
160 MPH	GPSS160	
180 MPH	GPSS180	
200 MPH	GPSS200	



GPS antenna



50 MPH



60 MPH



80 MPH



100 MPH



120 MPH



140 MPH



160 MPH



180 MPH



200 MPH

Industrial Series

Mechanical Gauges



boost 0-35 PSI



fuel pressure 0-15 PSI



fuel pressure 0-100 PSI



oil pressure 0-100 PSI



hose kit



vacuum boost



water pressure 0-35 PSI

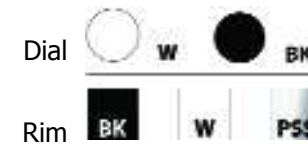


water pressure 0-60 PSI

cutout size: 2 1/16"

overall size: 2 3/8"

Description	Base Part Number	Requires
Boost 0-35 PSI	DCSMB35	hose kit
Fuel Pressure 0-15 PSI	DCSMFP	fuel hoses n/a
Fuel Pressure 0-100 PSI	DCSMFP100	
Oil Pressure 0-100 PSI	DCSMOP	hose kit
Vacuum/Boost 30 in hg/boost20	DCSMVB	hose kit
Water Pressure 0-35 PSI	DCSMWP	hose kit
Water Pressure 0-60 PSI	DCSMWP60	hose kit
Hose Kits - not to be used with fuel		
10 feet of hose and fittings	HKA	
25 feet of hose and fittings	HK	

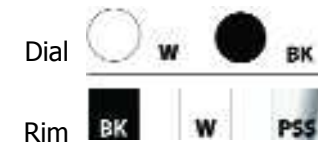


Industrial Series

Electric Gauges

- These electric gauges require the use of a four pin connector wire harness (unless otherwise noted) that we call a DCH harness.
- We offer these harnesses pre-assembled with labeled wire leads, 24 inches in length.

cutout size: 2 1/16"		overall size: 2 3/8"	
Description	Base Part Number	Requires	
Boost 60 PSI	DCSB60	-	
Fuel Level 0-90 OHMS	DCSFLGM	DCH/DCH24, fuel level sender	
Fuel Level 240-33 OHMS	DCSFL	DCH/DCH24, fuel level sender	
Fuel Pressure 0-15 PSI	DCSFP	DCH/DCH24, GSFP/WP	
Fuel Pressure 0-90 PSI	DCSFP90	DCH/DCH24, GSFP60/90	
Hourmeter	HM *	-	
Oil Pressure 0-80 PSI	DCSOP80	DCH/DCH24, GSOP80	
Oil Temperature 140-340° F	DCSOT	DCH/DCH24, GSOT1/8	
Transmission Temp 140-340° F	DCSTT	DCH/DCH24, GSOT1/8	
Trimmer Merc & Yamaha 10-90 OHMS	DCSTMM	DCH/DCH24	
Trimmer OMC 88-1 OHMS	DCSTMO	DCH/DCH24	
Voltmeter 8-18V	DCSVM	DCH/DCH24	
Voltmeter 18-32V	DCSVM24	DCH/DCH24	
Water Level	DCSWL	DCH/DCH24, water level sender	
Water Temperature 100-250° F	DCSWTA	DCH/DCH24, GSOT1/8	
Water Temperature 100-280° F	DCSWT	DCH/DCH24, GSWT1/8	
DCH Harnesses- pre-assembled			
12 volt system, 24 inch leads	DCH		
24 volt system, 24 inch leads	DCH24		



DCH Harness

Pin # 1 = BLUE 12v+ illumination
Pin # 2 = VIOLET 12v+ ignition power
Pin # 3 = BLACK engine or battery ground
Pin # 4 = GREEN signal from sender

* Note: Available with Mega or Race Rim only.

Industrial Series

Electric Gauges



boost 60 PSI



fuel level



fuel pressure 0-15 PSI



fuel pressure 0-90 PSI



hourmeter *



oil pressure 0-80 PSI



oil temperature
140-340° F



transmission temp
140-340° F



trimmer



voltmeter 8-18 V



voltmeter 8-32 V



water level



water temperature
100-250° F



water temperature
100-280° F