



pin  
base

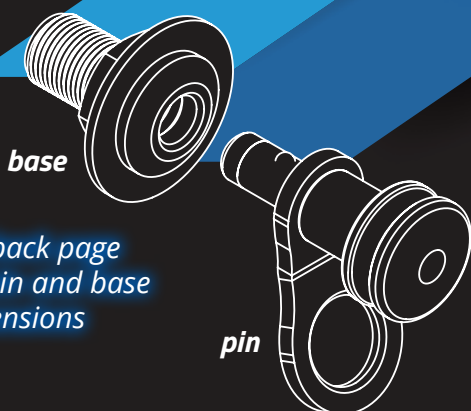
complete  
assembly



**LIVORSI**  
CompX Marine Inc. • [livorsi.com](http://livorsi.com)



# QUICK RELEASE PIN CLEATS



See back page  
for pin and base  
dimensions

## COMPLETE ASSEMBLY (pin and base)

Part number	Description	Overall length
QRKFBSB-150	short base; no door or weep hole	3-3/8"
QRKFBSB-225	long base; no door or weep hole	4-1/4"
QRKFBSBWD-225	long base; door and weep hole	4-1/4"

## Features:

(long and short base versions)

- Install fenders (located anywhere on the boat) in one quick click
- With or without popup door and weep hole
- Electropolished for corrosion resistance
- Type 316L stainless steel
- Soft-tip, won't scratch the gel coat
- Tested to 1,500+ lbs pull out force
- Private labeling available

**847.752.2700 • [livorsi.com](http://livorsi.com) • [sales@livorsi.com](mailto:sales@livorsi.com)**

Copyright 2022 © Livorsi Marine, Inc. / 847.752.2700 / [livorsi.com](http://livorsi.com) / 715 Center St., Grayslake, IL 60030  
Any companies and/or products referred to herein are marks or registered trademarks of their respective companies, owners and/or mark holders.



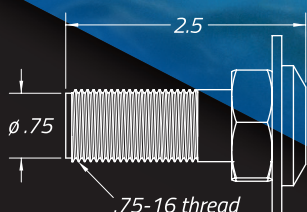
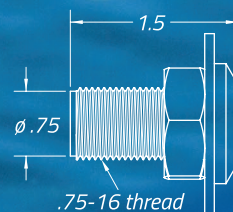


# QUICK RELEASE PIN CLEATS

## BASE ONLY

Part number	Description	Overall length
QRBSB-150	short base only; no door or weep hole	1.5"
QRBSB-225	long base only; no door or weep hole	2.25"
QRBSBWD-225	long base only; door and weep hole	2.25"

*short base,  
no door or  
weep hole*



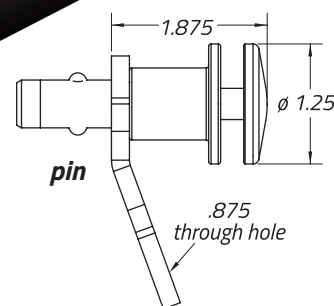
*long base;  
door and  
weep hole*



NOTE: "WD" in part number indicates door and weep hole, which allows for (optional) draining

## TOP FENDER PIN ONLY

Part number	Description	Overall length
QRTFB	fender cleat; pin only	2.5"



*GoPro  
pin only*

## GoPro® MOUNTS

Part number	Description
QRKGPSB-150	GoPro complete assembly (base and pin)
QRBSB-150	short base only; no door or weep hole
QRTGP	GoPro pin only

NOTE: for use with short base; no door or weep hole (part number QRBSB-150)

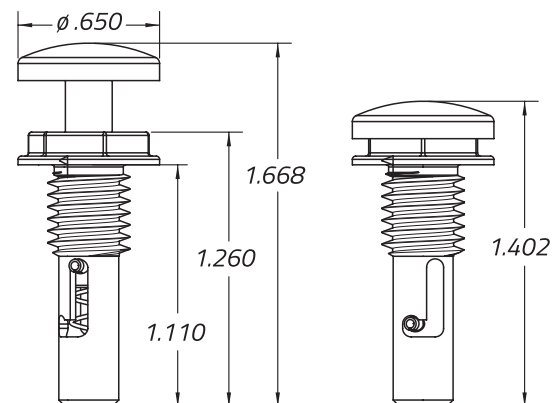
GoPro device not included



# POPUP CANVAS / BUNGEE CLEATS

## Features:

- Great for use with bungee canvas style boat covers
- Strong and durable electropolished 316 stainless steel construction
- Low profile smooth finish prevents clothing snags and scratches when brushed against
- Push in and twist left to extend the cleat; push in and twist right to return the cleat to its secure, recessed position
- Threads directly into fiberglass or wood
- Many other uses



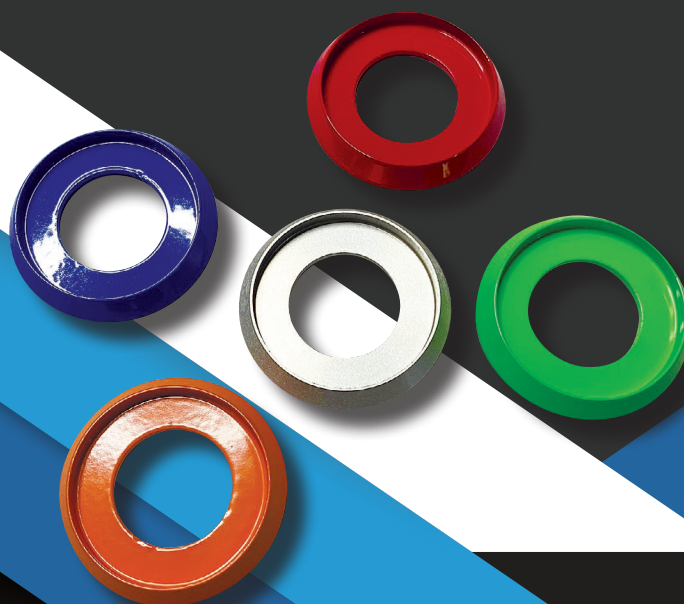
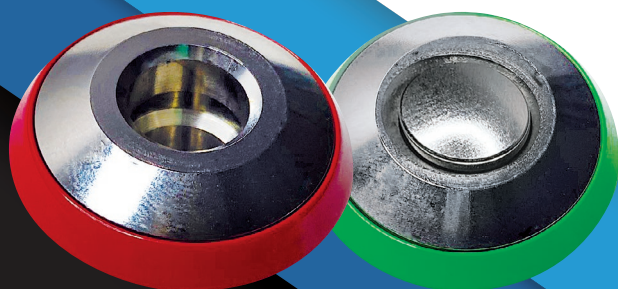
### Popup canvas / bungee cleats

Part number	Description
BPOP	popup canvas / bungee cleat





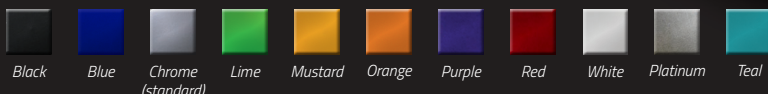
# ACCESSORIES



## DECORATIVE BEZEL

Part number	Description	Dimension
QRFAB+COLOR	Optional decorative bezel, available in 12 colors	1.5" outer diameter

### Color options



**Note: when using the blind installation kit, drilling a 15/16" hole is required for the nut to pass through the hole**



## BLIND MOUNT NUT

Part number	Description	Dimension
QRFBNIT	blind mount installation tool	hole diameter needed: 15/16"

## PUSH-ON BARB FITTING

Part number	Description	Dimension
QRFDHF	1/4" NPT 3/16" push-on barb fitting for drain	.86" long



**installed on long base with door and weep hole, part number QRBSBWD-225**

3/16" inner diameter hose

QRFDHF



**847.752.2700 • livorsi.com • sales@livorsi.com**

Copyright 2022 © Livorsi Marine, Inc. / 847.752.2700 / livorsi.com / 715 Center St., Grayslake, IL 60030  
Any companies and/or products referred to herein are marks or registered trademarks of their respective companies, owners and/or mark holders.